

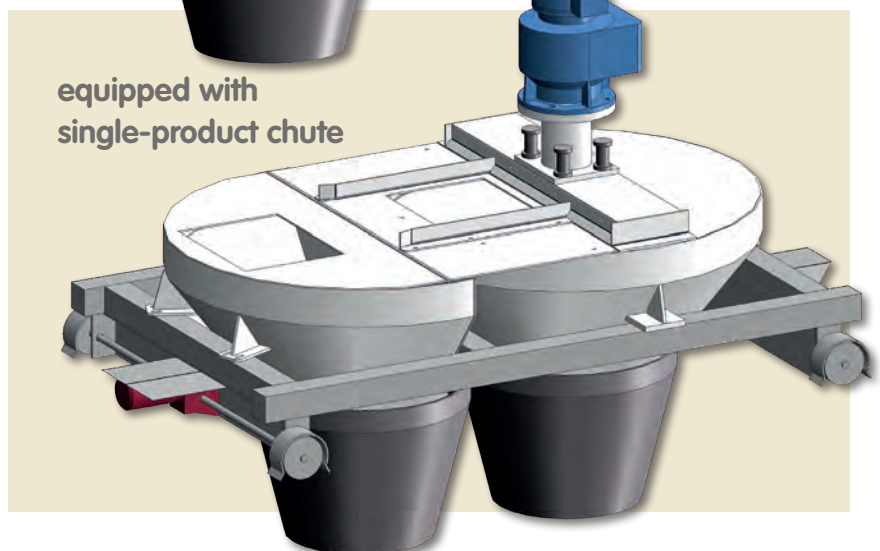
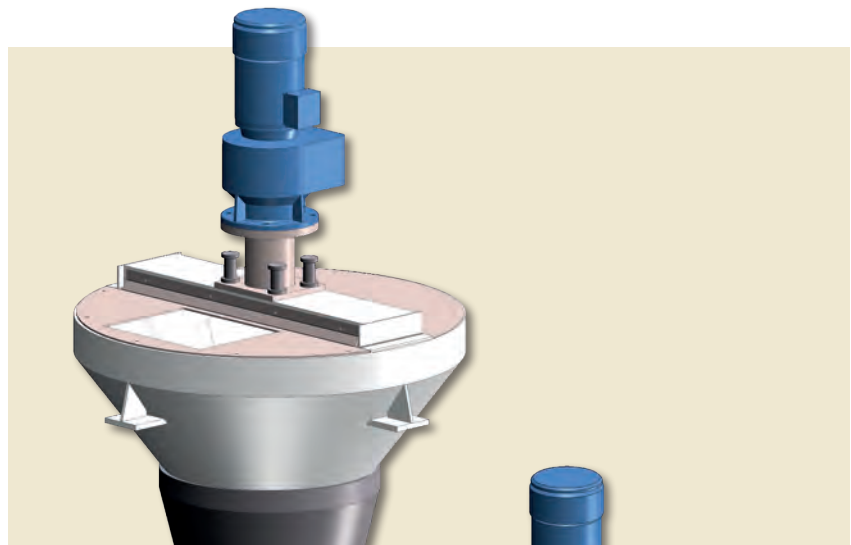


WÖHWA Continuous Flow Mixer Type 15

for mixing of bulk materials at discharge or loadout points

Features/Benefits

- Low power consumption
- Minimal Wear
- Long service life
- Reliable prevention of blocking caused by coarse aggregate
- Single-product chute
- Optimum quality mix
- Multidimensional mixing
- Adjustable flow rate / rotation speed
- Accurate material discharge
- Same loadout point for single products / mixtures
- Maintenance / spare parts provisioning



equipped with
single-product chute



Continuous Flow Mixer Type 15

Applications

Continuous Flow Mixers guarantee achieving a high degree of mixture quality within the shortest possible time. They can easily cope with demanding mixing tasks for products of varying density, aggregate size, and consistency. The functions of the WÖHWA Continuous Flow Mixer have been designed and developed for producing an optimum quality mix. This includes the design of the mixer paddles, the possibility of controlling flow rates, and the wear-resisting lining of the cone for use in gravel/sand/quartz/natural stone applications.

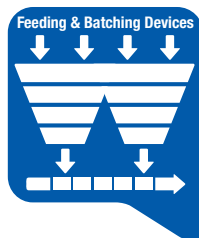
WÖHWA mixers were developed for continuous processes. They are suitable for tasks requiring the processing of dry or wet solid materials. Its main application is the production of mineral blends, especially blends for road construction containing coarse aggregates.

The WÖHWA Continuous Flow Mixer is usually installed at the end of the loadout conveyor on a shuttle carriage that moves either the mixer or the separate single-product chute into loadout position. The blending system feeds the different aggregate sizes of a mixture in several layers on top of each other (material bed) to the loadout conveyor belt that transports the feed material to the mixer or, in the case of one aggregate size only, to the single-product chute.

On its way, the material is moistened superficially, if required. The superimposed layers of the material bed hit the wall of the mixer's cone and are converted by the double set of mixing paddles into a homogeneous moist mixture. The mixture is then loaded out directly onto the vehicle through the breeches.

An optimum quality mix

WÖHWA Continuous Flow Mixers are used for continuous homogenization of bulk materials at transfer or loadout points. The materials are either processed into a dry or, by adding water, into a moist homogeneous mixture. In both cases, the highest possible mix ratio is achieved.



- The material stream is mixed by a double agitator with eight offset paddles with variably exchangeable paddles.
- A centering device brakes the rotation of the material stream and reduces scattering and demixing during discharge.
- A cleaner in the mixer prevents residues from sticking to the mixer wall when feed material or aggregate sizes are changed.
- Rubber breeches concentrate the material stream for a safe, precise and dust-free loadout.

Multidimensional Mixing

The agitators move the material stream in different directions with eight offset paddles to form a continuously consistent mixture. The agitators, held by strong, specially shaped support arms and connected to a centrally located drive shaft, transport the material from the core outwards and upwards along the mixer wall. During its passage down the center of the mixer cone, the mixed material is mixed again horizontally by the support arms and paddles (double agitator).

- The entire mixer content is constantly in motion in changing directions.
- No dead spots within the conical mixer.
- Even with partial fillings of the entire usable cone, an optimum mixing quality with accuracies of over 1:100 000 is achieved.

Control of flow rate by adjustable speeds

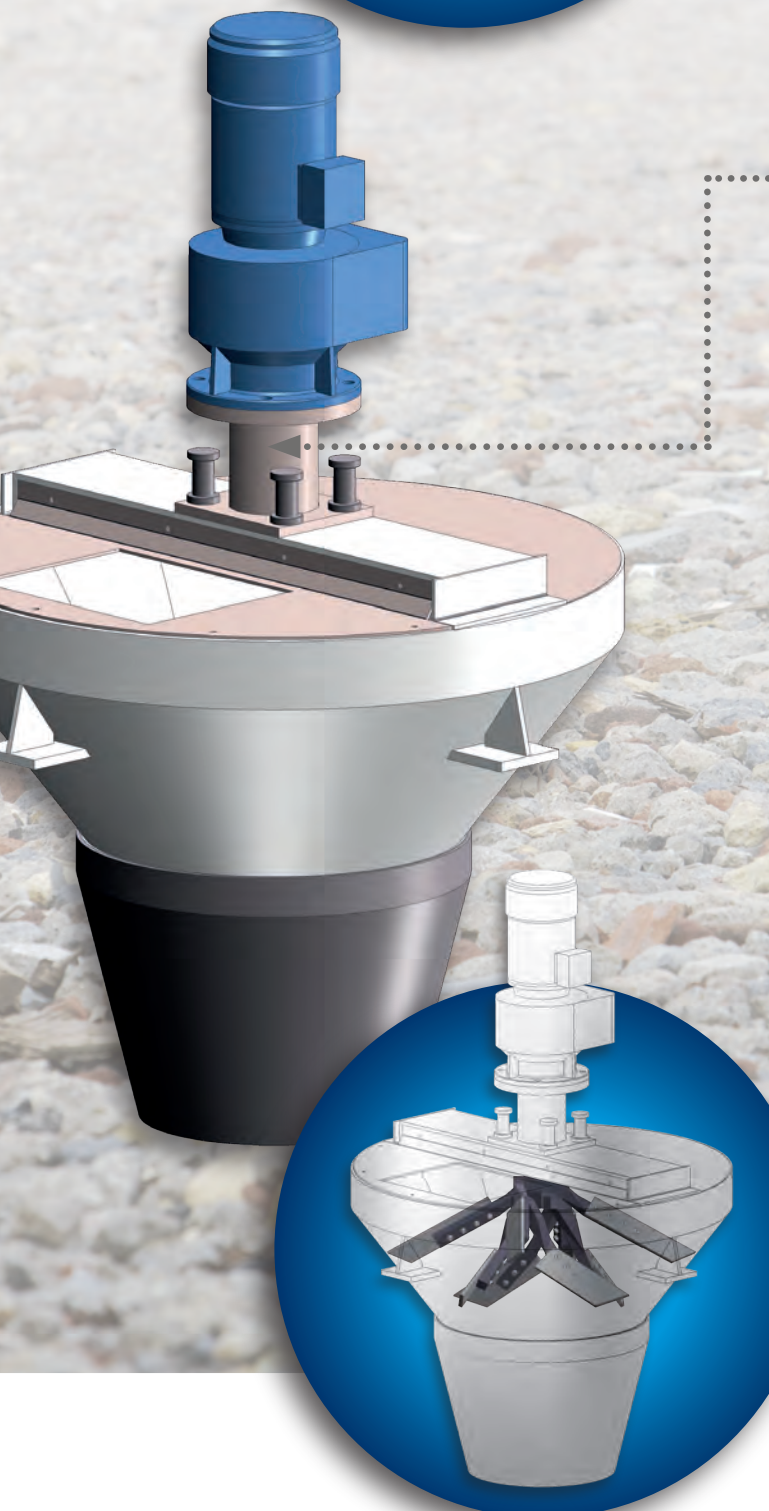
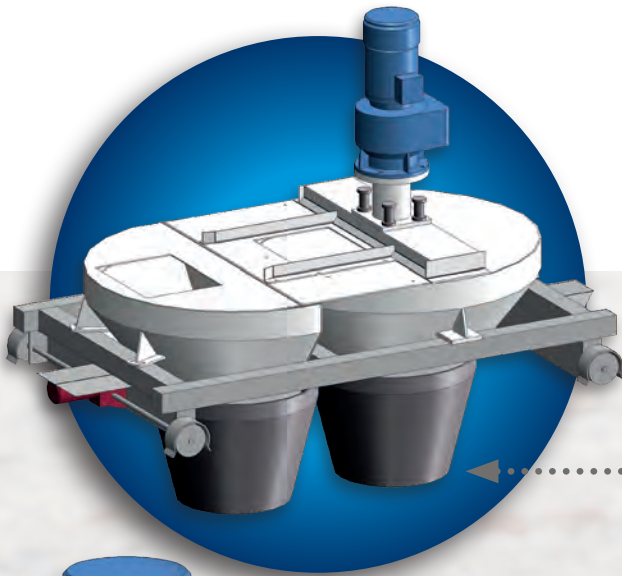
Since each material has its own flow and feed rate, the maximum possible throughput capacity at which the best mix can be achieved varies accordingly. Operating the double agitator at variable speeds, in adjustment to the materials to be mixed, makes extremely gentle intermixing or admixing of, for example, coarse aggregates possible. High speeds allow achieving an intensive dispersion of fine or liquid materials.

- The use of a frequency converter (available as an extra option) allows an individual adjustment of the speed to flow rates and aggregate sizes.
- Overload protection of the agitators is guaranteed

Accurate material discharge

A centering device, mounted at the discharge end of the mixer, brakes the rotation of the material stream and reduces scattering and demixing. The breeches for the mixer and for the single-product chute, installed below the centering devices, concentrate the material stream for a safe and precise loadout and help minimizing dust generation. The single-product chute is also equipped with a centering device and rubber breeches.

- Centering Devices made of wear-resistant Hardox
- Rubber Breeches made of highly wear-resistant material, flexible and self-cleaning



Features/Benefits

✓ Same loadout point for single products and mixtures

The Continuous Flow Mixer with a single-product chute is supplied with a shuttle carriage that can be moved horizontally with high precision. It permits using the same loadout point either for mixer or single-product chute.

✓ Mixer paddles available in different sizes

Various exchangeable mixer paddle sizes are available to adjust the mixer for coping with differing feedstock. The paddles are easily exchangeable and available in several sizes to achieve optimum mixtures.

✓ Special bearing design for drive motor

The mixer's drive unit is spring-mounted for the purpose of protecting mechanics and drive against destruction caused by rocks that may occasionally occur in the material feed and would otherwise block the mixer. This design also reduces power consumption and wear.

✓ Advantageous installation features

The WÖHWA Continuous Flow Mixer has a low height and can easily be integrated into a large variety of loadout terminals. It requires only a minimum of steel construction and its weight is much less than that of any other competitive product, thus saving costs for the steel construction and for the installation.

✓ Optimum wear resistance

Hardox is the standard material for the bolted wear-resistant lining and the paddles. Special cast-iron tiles are available for use with highly abrasive materials.

Wear and tear is not the same at all wear plates of the mixer wall. Therefore, the more heavily worn plates at the feed point can be exchanged for the less worn plates from the opposite side.

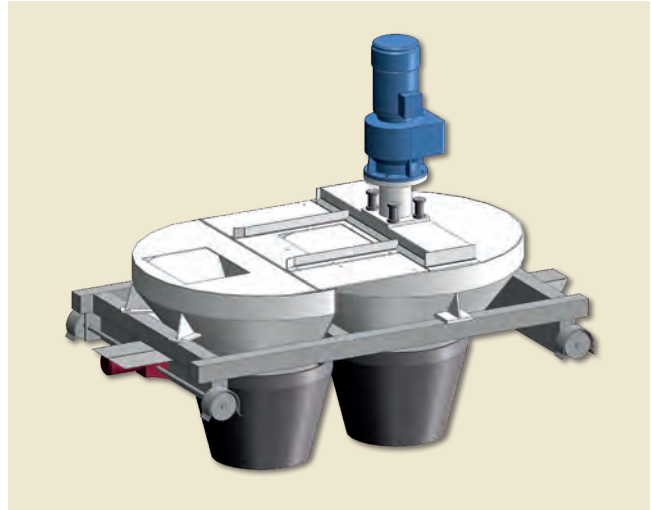
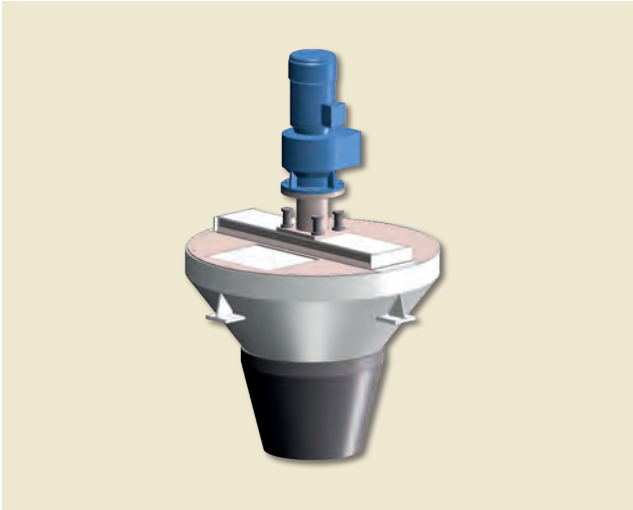
✓ Maintenance and Spare Parts

The WÖHWA Continuous Flow Mixer has been designed to allow easy maintenance and repair. Large inspection doors provide quick access and allow easy cleaning and inspection. Those parts of the agitators that are subject to the highest degree of wear can be replaced easily and quickly. Individual plates of the wear-resistant lining can even be relocated to positions that are less subject to wear. Spare parts provisioning is guaranteed reliably on a long-term basis.



WÖHWA GmbH
 Öhringer Straße 6 · 74629 Pfedelbach · GERMANY
 Phone +49 7941 9131-0
 info@woehwa.com · www.woehwa.com

WÖHWA Continuous Flow Mixer Type 15 – Product portfolio



CONTINUOUS FLOW MIXER

TYPE	GRAIN SIZE	MIXING CAPACITY
15.10 „1000“ ø	up to 22 mm	360 t/h
15.12 „1200“ ø	up to 45 mm	500 t/h
15.14 „1400“ ø	up to 60 mm	800 t/h
15.16 „1600“ ø	up to 60 mm	1200 t/h

CONTINUOUS FLOW MIXER WITH SINGLE-PRODUCT CHUTE

SHUTTLE-CARRIAGE WIDTH 1630 MM	SINGLE-PRODUCT CHUTE
Length 2550	„1000“
Length 2750	„1200“
Length 2950	„1400“
Length 3150	„1400“

FLOW RATES

TYPE	15.10 „1000“	15.12 „1200“	15.14 „1400“	15.16 „1600“
Flow Rate	360 t/h	500 t/h	800 t/h	1200 t/h
Grain sizes up to 22 mm	---	---	---	---
Grain sizes up to 45 mm	---	---	---	---
Grain sizes up to 60 mm	---	---	---	---
Single-product feed chute opening	400 mm x 250 mm	500 mm x 300 mm	500 mm x 400 mm	500 mm x 400 mm

EXTRAS

LINING WITH CAST-IRON TILES



Cast-iron tiles for lining of mixer cone in material G-X350 CrMoNi 2021, thickness 25 mm

LATCH LOCK / KEY SWITCH



Latch lock for the cover of the Continuous Flow Mixer and for the power isolation switch in the control cabinet. The key for opening the latch lock at the cover of the Continuous Flow Mixer can only be removed from the power isolation switch in the control cabinet after the power supply for the mixer motor has been cut off.

CLEANER FOR MIXER WALL



Dirt-resistant cleaner made of wear-resistant steel (Hardox 400) for cleaning the mixer wall from sticky particles.

FREQUENCY CONVERTER



Frequency converter for adjusting the mixing speed in case of strongly fluctuating material compositions.